





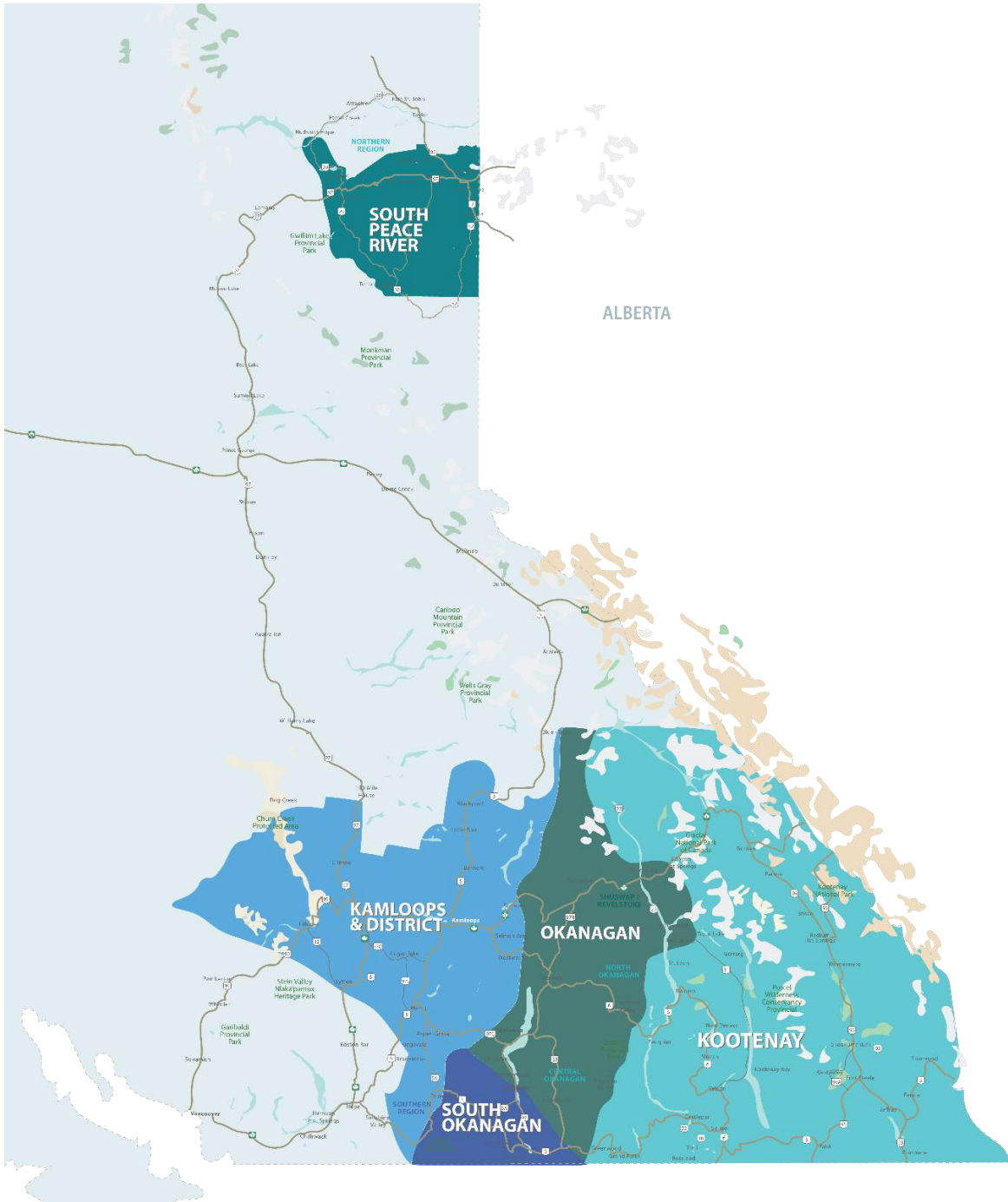


**RESIDENTIAL SALES\***  
**SEPTEMBER 2022**  
**SUMMARY STATISTICS**

	 Units Sold	 Dollar Volume (Millions)	 Active Listings	 New Listings
<b>CENTRAL OKANAGAN</b>	334 ↓ -39.1%	\$321.2 ↓ -26.3%	2,122 ↑ 89.1%	799 ↑ 5.8%
<b>NORTH OKANAGAN</b>	120 ↓ -29.4%	\$86.2 ↓ -21.7%	672 ↑ 44.2%	222 ↓ -1.8%
<b>SHUSWAP / REVELSTOKE</b>	91 ↓ -3.2%	\$57.5 ↑ 1.0%	507 ↑ 56.0%	123 ↓ -20.1%
<b>SOUTH OKANAGAN</b>	101 ↓ -52.6%	\$69.1 ↓ -49.5%	850 ↑ 41.4%	178 ↓ -23.6%
<b>SOUTH PEACE RIVER AREA</b>	37 ↓ -7.5%	\$9.8 ↓ -7.7%	277 ↓ -17.6%	10 ↓ -78.3%
<b>KAMLOOPS AND DISTRICT</b>	166 ↓ -46.1%	\$92.8 ↓ -44.8%	1,984 ↑ 124.7%	359 ↓ -7.2%
<b>KOOTENAY</b>	235 ↓ -34.0%	\$119.9 ↓ -28.1%	1,363 ↑ 21.6%	390 ↓ -10.3%
<b>TOTAL ASSOCIATION</b>	1,084 ↓ -37.3%	\$756.5 ↓ -30.3%	7,775 ↑ 60.2%	2,081 ↓ -6.9%

\*Residential = Acreage, Duplex, Mobile Home, Recreational, Single Family, 3/4Plex, Apartment & Townhouse. Excludes Land

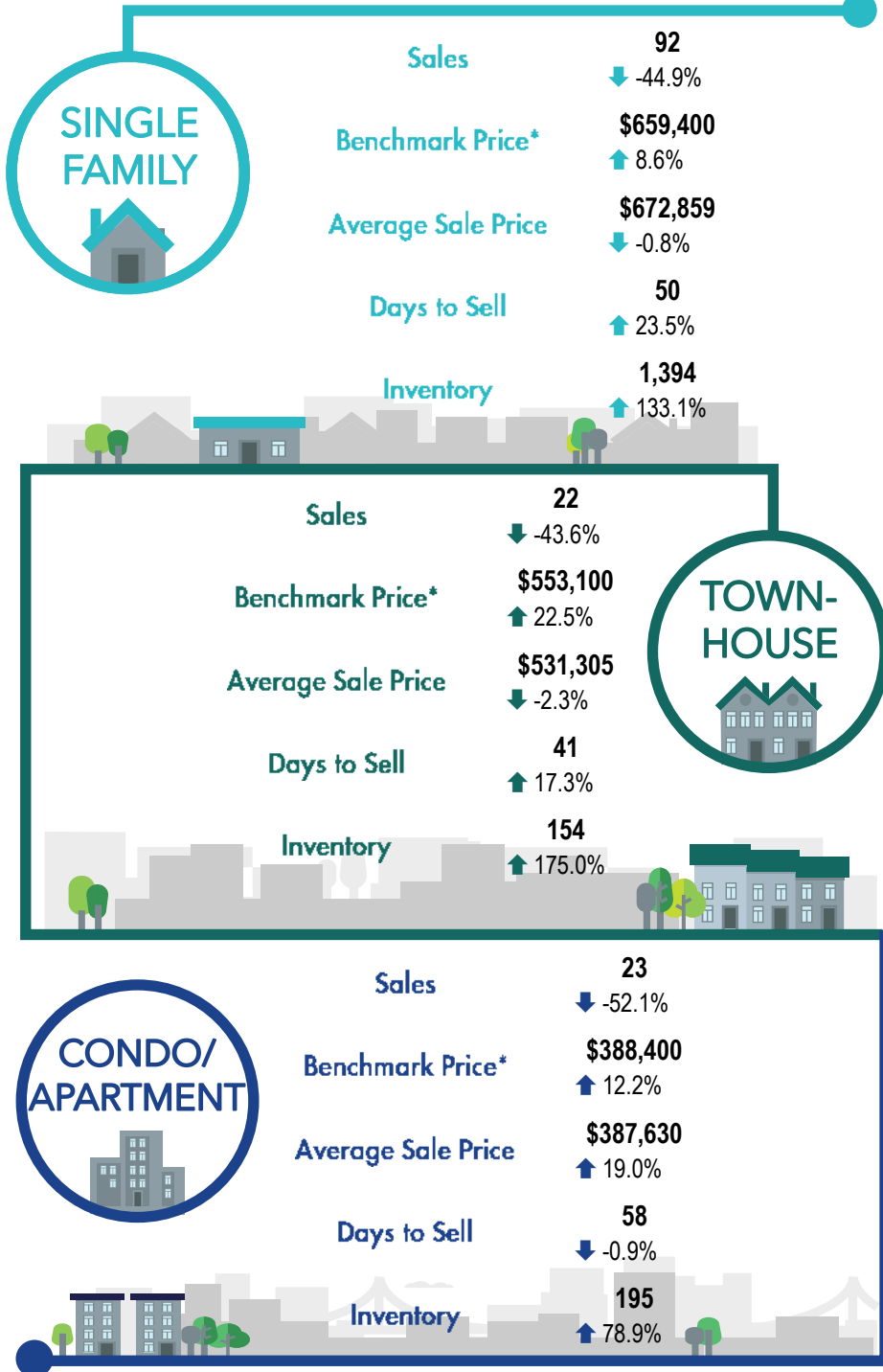
\*\*Percentage indicate change from the same period last year



This map is for informational purposes. It does not represent an on-the-ground survey and represents only the approximate relative location of property boundaries.



**KAMLOOPS AND DISTRICT REGION**



\*Benchmark Price: Estimated sales price of a benchmark property. Benchmarks represent a typical property within each market.

\*\*Percentage indicate change from the same period last year